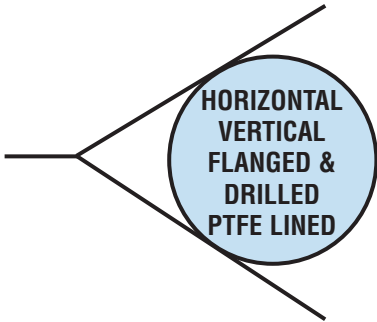




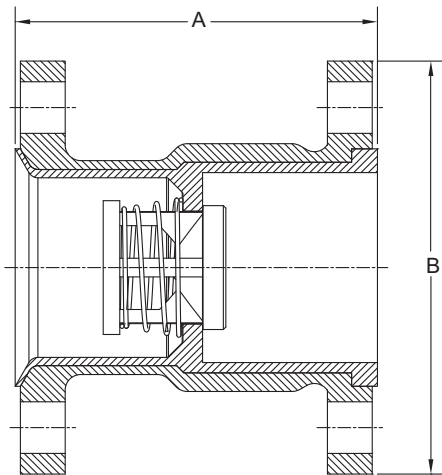
PED 97/23/EC
COMPLIANT
See page 55 for Details



The **Check-All® Flanged & Drilled — Fluoropolymer (PTFE) Lined (HT)** check valve is a one piece body with ANSI/ASME B16.5 Class 150 flanged ends. The valve has a solid one piece PTFE liner which covers the flange faces out to the raised face diameter. All wetted surfaces are fluoropolymer (PTFE/FEP/PFA) including the FEP encapsulated stainless steel spring.

Style HT bodies are made of **cast carbon steel only**. The liner is made of virgin PTFE. It is installed as one solid piece of PTFE and the internal geometrical shape is machined. The PTFE liner has a **minimum wall** thickness of 3/32 inch, which guarantees against pin holes which can be present in fused liners.

The HT valve can also be used as a low pressure relief valve or vacuum breaker by using the desired spring settings.



FLOW →

Nom. Pipe Size	Size Code	A	B	Orifice ¹ Diameter
1	H	3.75	4-1/4	0.890
1-1/2	J	4.38	5	1.385
2	K	5.13	6	2.025

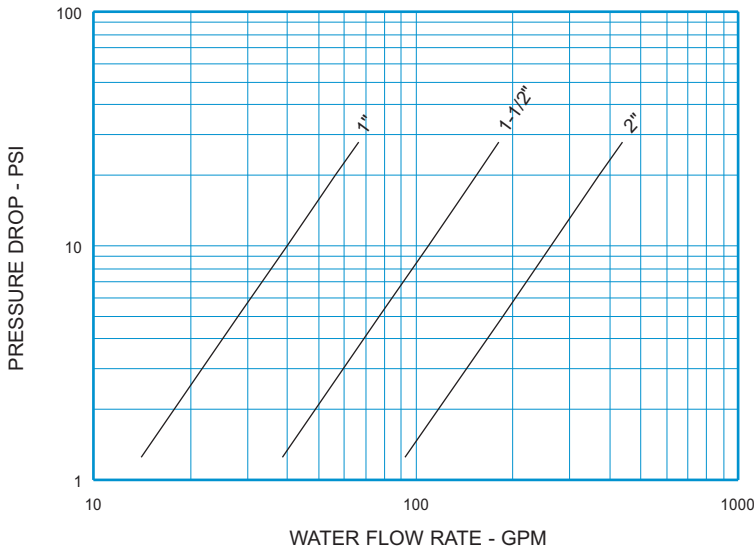
¹Due to molding process, Orifice Diameter may vary.

Cast Body Material ²	Liner Material ²	Nominal Pipe Size	Non-Shock Pressure-Temperature Rating ³
WCB/WCC Carbon Steel (CS)	PTFE (TF)	1"	55 PSIG @ 100°F
		1-1/2" - 2"	20 PSIG @ 100°F

² See page 54 for material grade information.

³ Consult the factory for reduced P-T rating of PTFE valves above 100°F.

Horizontal-Vertical Flanged & Drilled PTFE Lined
For Water at 72°F

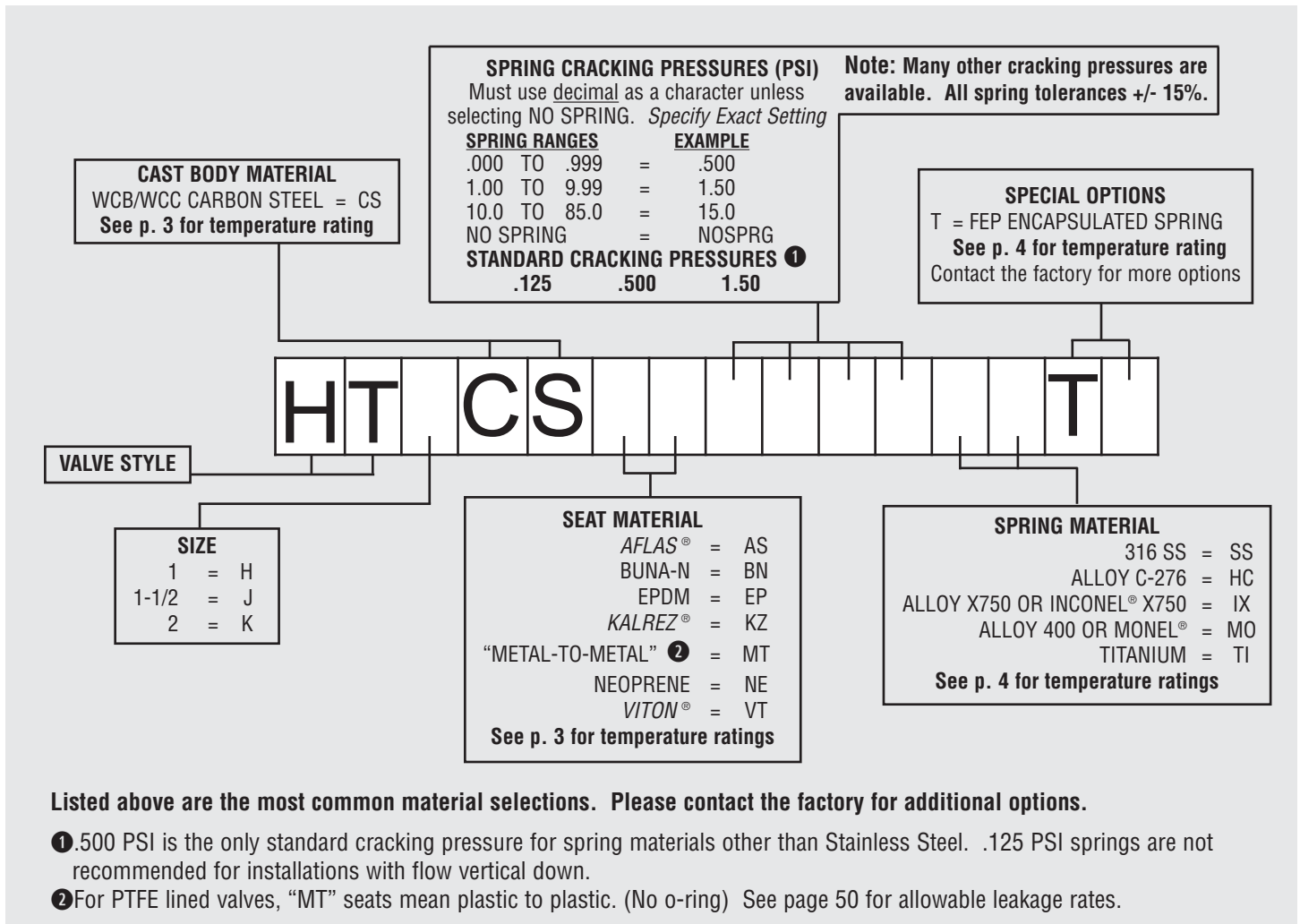


Note: All flow curves and Cv values presume the valves are fully open with 1/2 PSI cracking pressure springs. Consult the factory for more information.

STYLE HT C _v VALUES & VALVE WEIGHTS		
C _v	SIZE	PTFE LINED
12.6	1	3.7 lb.
34.5	1-1/2	5.8 lb.
83.0	2	9.4 lb.

See page 49 for Flow Formulae.
Valve weights are approximate.

**HOW TO ORDER
CHECK-ALL STYLE HT**



AFLAS® AGC Chemicals Americas, Inc. INCONEL® Special Metals Family of Companies KALREZ® E.I. du Pont de Nemours and Company
MONEL® Special Metals Family of Companies VITON® E.I. du Pont de Nemours and Company