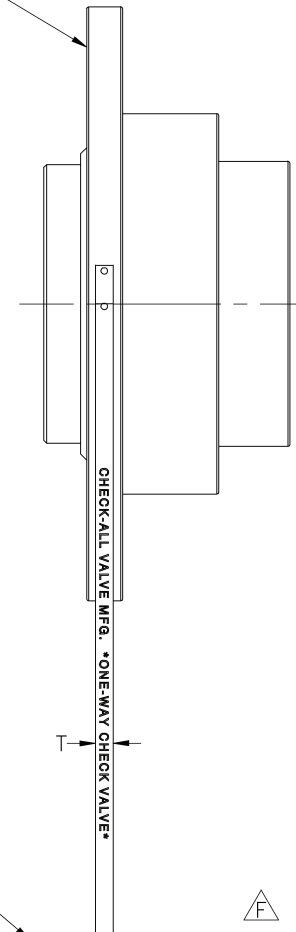


PHONO FINISH 2 SIDES  
125-250 MICROINCHES



VALVE SIZE NPS	L MIN INCHES	T INCHES
1/2 - 6	5.94	3/16
8 - 20	7.50	7/16

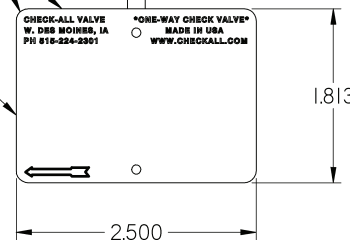
△ E

ORDER INFORMATION: SPECIFY "FLAG TAG" FOR THIS TAGGING OPTION  
NOTES:

- 1 THE COMPLETE PART NUMBER WILL BE STAMPED ON THE TAG ALONG WITH CUSTOMER IDENTIFICATION CODES IF ANY.
- 2 THE 304 STAINLESS STEEL STRIP IS AT LEAST 0.030 INCHES THICK.
- 3 THE 304 STAINLESS STEEL TAG IS AT LEAST 0.030 INCHES THICK.
- 4 ALL CORNERS AND EDGES ARE ROUNDED AND SMOOTH.
- 5 STRIPS ARE ATTACHED TO THE VALVE BODY BY:  
NPS 1/2 - 6: SPOT WELDED  
NPS 8 -20: STAINLESS STEEL DRIVE SCREWS

△ F

RIVETS HOLD TAG TO STRIP



REV	ECR/PROJ#	DESCRIPTION	DATE
D		UPDATED DRAWING	12-16-97
E	ECR 775	HOLE LOCATION & BRUSHED FINISH	9-15-04
F	ECR 1059	UPDATED TAG	4-26-10

TOLERANCES: ( IN )	
DECIMAL .XX ± 0.010 .XXX ± 0.005	FRACTIONAL ± 0.015
ANGULAR ± 3°	FINISH 63 ✓



CHECK-ALL VALVE MFG. CO.  
1800 FULLER ROAD  
WEST DES MOINES, IA 50265

DWG NO: 1964	REV: F
SCALE: NTS	SIZE: A
DRAWN: SD	DATE: 4-26-10
APPVD: SD	DATE: 4-26-10
ISSUED: MAN	DATE: 4-26-10

THIS DRAWING IS THE EXCLUSIVE PROPERTY OF THE CHECK-ALL VALVE MFG. CO. ITS ACCEPTANCE CONSTITUTES AN AGREEMENT THAT IT SHALL BE TREATED AS A STRICTLY CONFIDENT DOCUMENT AND IS NOT TO BE COMMUNICATED, DISCLOSED, OR COPIED EXCEPT BY PERMISSION OF THE CHECK-ALL VALVE MFG. CO.

FIV WITH FLAG TAG